

AIRLINE COUPLINGS (NOT SHOWN BELOW) ARE ON PAGES 194 TO 198.

MOUNTING CLAMPS

Pages 179 to 183



HYDRAULIC QUICK RELEASE COUPLINGS

Pages 184 to 193

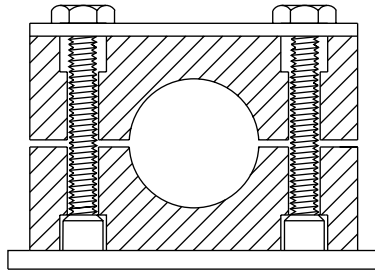


HYDRAULIC FILTERS

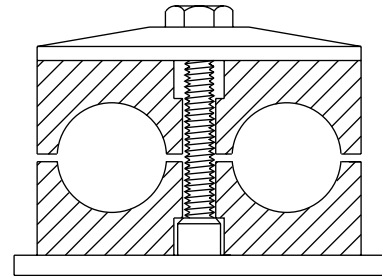
Pages 199 to 204

CRIMPING EQUIPMENT Pages 205 to 208





RCS SERIES – SINGLE



RCD SERIES – DOUBLE

RYCO RCS and RCD Series Mounting Clamps Comply with Specification DIN 3015

Recommended for: Fast, economic and safe mounting of hydraulic hose and hydraulic tube onto machinery and steelwork. Grooves inside the jaws of the clamp grip hose or tube to reduce vibration and help absorb noise and shocks.

Mounting Options: Standard mounting is Weld On Bottom Plate. Can also be Rail mounted, and can be Stacked vertically on top of each other. For RCS Series Single Clamps, Double Bottom Plates and Multiple Bottom Plates allow mounting of more than one Clamp on a common bottom plate.

Temperature Range: From -30°C to +90°C

Materials:

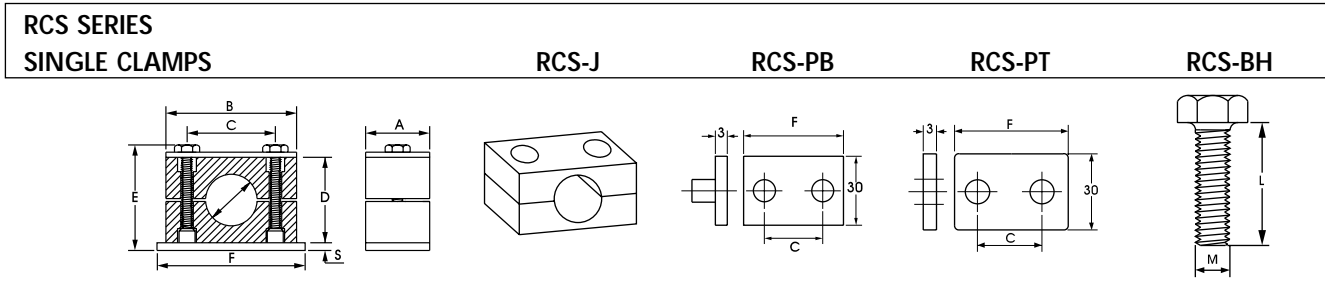
Bottom Plate	Steel, black finish suitable for welding.	Top Plate	Steel, gold passivated.
Jaws	Green polypropylene. Upper and lower jaws are identical, and size is moulded into each half.	Bolts	Steel, plated.
		Rails	Steel, unplated.
		Rail Nuts	Aluminium.
		Stacking Plates	Steel, gold passivated.

Ordering Details: Order as Complete Clamps, or individual components if preferred. Complete Clamps are supplied unassembled. Please order in multiples of 5 complete clamps. Standard Pack Size for Components is 5 pieces. Please order in Pack Sizes.

Size Selection: RCS & RCD Series Clamps are available with nominal diameters from 6mm to 42mm. The Nominal Diameter Size of the Clamp is the minimum diameter range of the Clamp, for example, a 20mm clamp suits Outside Diameters from 20,0mm up to 21,9mm. After assembly, the two Jaw halves of a correctly chosen Clamp should not contact each other.

CLAMP NOM. SIZE	SUITS HOSE TYPE & SIZE														
	T1	T2	H12R	H13R	RQP1	RQP2	TXA2	AS1	AS2	HSP	DF2	PL1	P1HT	RTH1	
mm															
10												PL13		RTH14	
12	T13											PL14		RTH16	
12,7	T14				RQP14								P14HT		
14		T24									DF24	PL15	P15HT		
15						RQP24									
16	T16				RQP16			AS14				PL16	P16HT	RTH18	
18									AS24	HSP04	DF26				
19		T26				RQP26								RTH110	
20	T18		H1206R		RQP18			AS16	AS26		DF28	PL18	P18HT		
22	T110	T28			RQP110	RQP28	TXA28	AS18		HSP06		PL110	P110HT	RTH112	
25,4		T210	H1208R			RQP210	TXA210		AS28						
28	T112	T212			RQP112				AS210	HSP08	DF212	PL112	P112HT	RTH116	
30			H1212R			RQP212	TXA212	AS112							
32				H1312R					AS212	HSP12					
35															
38	T116	T216	H1216R		RQP116	RQP216	TXA216	AS116							
42				H1316R					AS216	HSP16					

Above details are correct as at time of publication. Selection chart is intended as a guide for the selection of clamps; manufacturing tolerances may affect size selection. Size selection of clamp should be confirmed with the actual hose to be used.



	CLAMP NOMINAL SIZE	COMPLETE CLAMP	JAWS (PAIR)	PLATE BOTTOM	PLATE TOP	BOLT HEX (2 PER CLAMP)
GROUP	mm	PART NO	PART NO	PART NO	PART NO	PART NO
1	6	RCS-06	RCS-06J	RCS-1PB	RCS-1PT	RCS-1BH
	8	RCS-08	RCS-08J			
	10	RCS-10	RCS-10J			
	12	RCS-12	RCS-12J			
2	12,7	RCS-127	RCS-127J	RCS-2PB	RCS-2PT	RCS-2BH
	14	RCS-14	RCS-14J			
	15	RCS-15	RCS-15J			
	16	RCS-16	RCS-16J			
	18	RCS-18	RCS-18J			
3	19	RCS-19	RCS-19J	RCS-3PB	RCS-3PT	RCS-3BH
	20	RCS-20	RCS-20J			
	22	RCS-22	RCS-22J			
	25,4	RCS-254	RCS-254J			
4	28	RCS-28	RCS-28J	RCS-4PB	RCS-4PT	RCS-4BH
	30	RCS-30	RCS-30J			
5	32	RCS-32	RCS-32J	RCS-5PB	RCS-5PT	RCS-5BH
	35	RCS-35	RCS-35J			
	38	RCS-38	RCS-38J			
	42	RCS-42	RCS-42J			

Clamps are divided into Groups 1 to 5.
Within each Group, all components except the Jaws have the same size.

DIMENSIONS mm	A	B	C	D	E	F	S	BOLT M x L
GROUP 1	30	37	20	27	37	42	3	M6 x 30
GROUP 2	30	43	26	33	43	48	3	M6 x 35
GROUP 3	30	50	33	35	45	55	3	M6 x 40
GROUP 4	30	57	40	42	53	62	3	M6 x 45
GROUP 5	30	68	52	58	69	74	3	M6 x 60

ASSEMBLY INSTRUCTIONS:

Assembly with Bottom Plate

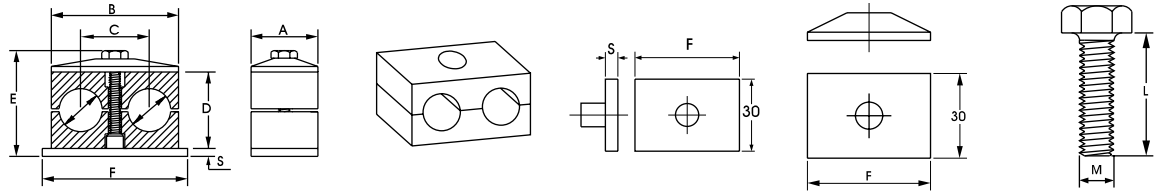
Weld metal Bottom Plate in position. (Do not weld with Polypropylene Jaws in place). Position lower half of Jaws on Bottom Plate. Insert Hose or Tube. Position upper half of Jaws over Hose or Tube and secure in place with Bolts.

See page 183 for Bolt Torque.

Assembly with Rail Mount Components and Stacking Components. See page 183.

Clamps should be positioned both before and after bends, as near as possible to the bend.

RCD SERIES
DOUBLE CLAMPS



	CLAMP NOMINAL SIZE	COMPLETE CLAMP	JAWS (PAIR)	PLATE BOTTOM	PLATE TOP	BOLT HEX (1 PER CLAMP)
GROUP	mm	PART NO	PART NO	PART NO	PART NO	PART NO
1	6-6	RCD-06	RCD-06J	RCD-1PB	RCD-1PT	RCD-1BH
	8-8	RCD-08	RCD-08J			
	10-10	RCD-10	RCD-10J			
	12-12	RCD-12	RCD-12J			
2	12,7-12,7	RCD-127	RCD-127J	RCD-2PB	RCD-2PT	RCD-2BH
	14-14	RCD-14	RCD-14J			
	15-15	RCD-15	RCD-15J			
	16-16	RCD-16	RCD-16J			
	18-18	RCD-18	RCD-18J			
3	19-19	RCD-19	RCD-19J	RCD-3PB	RCD-3PT	RCD-3BH
	20-20	RCD-20	RCD-20J			
	22-22	RCD-22	RCD-22J			
	25,4-25,4	RCD-254	RCD-254J			
4	28-28	RCD-28	RCD-28J	RCD-4PB	RCD-4PT	RCD-4BH
	30-30	RCD-30	RCD-30J			
5	32-32	RCD-32	RCD-32J	RCD-5PB	RCD-5PT	RCD-5BH
	35-35	RCD-35	RCD-35J			
	38-38	RCD-38	RCD-38J			
	42-42	RCD-42	RCD-42J			

Clamps are divided into Groups 1 to 5.
Within each Group, all components except the Jaws have the same size.

DIMENSIONS mm	A	B	C	D	E	F	S	BOLT M x L
GROUP 1	30	37	20	25	40	37	3	M6 x 30
GROUP 2	30	53	29	26	43	55	5	M8 x 35
GROUP 3	30	67	36	37	54	70	5	M8 x 45
GROUP 4	30	82	45	42	60	85	5	M8 x 50
GROUP 5	30	106	56	54	72	110	5	M8 x 60

ASSEMBLY INSTRUCTIONS:

Assembly with Bottom Plate

Weld metal Bottom Plate in position. (Do not weld with Polypropylene Jaws in place). Position lower half of Jaws on Bottom Plate. Insert Hose or Tube. Position upper half of Jaws over Hose or Tube and secure in place with Bolts.

See page 183 for Bolt Torque.

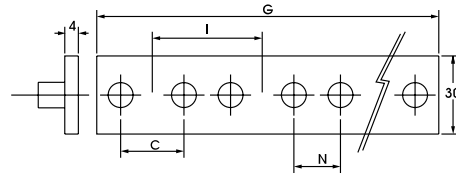
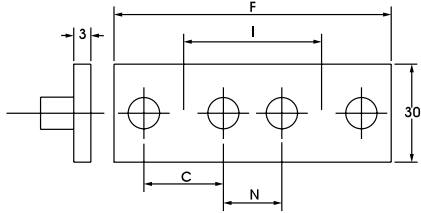
Assembly with Rail Mount Components and Stacking Components. See page 183.

Clamps should be positioned both before and after bends, as near as possible to the bend.

RCS CLAMPS DOUBLE & MULTIPLE PLATE BOTTOM

RCS-PD

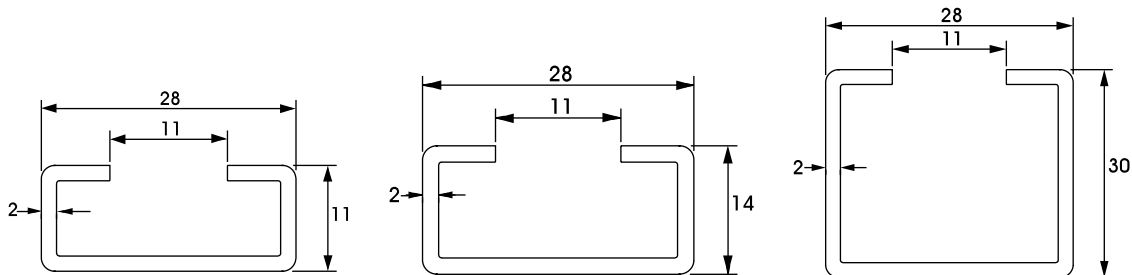
RCS-PM



TO SUIT GROUP	DOUBLE BOTTOM PLATE FOR 2 CLAMPS	DIMENSIONS mm					MULTIPLE BOTTOM PLATE FOR 10 CLAMPS
		C	N	I	F	G	
GROUP 1	RCS-1PD	20	20	40	81	401	RCS-1PM
GROUP 2	RCS-2PD	26	18	44	91	443	RCS-2PM
GROUP 3	RCS-3PD	33	19	52	106	522	RCS-3PM

RAIL MOUNT COMPONENTS

RAIL - SUPPLIED IN 2 METRE LENGTHS SUITS RC1 AND RC2 SERIES CLAMPS
THREE DIFFERENT HEIGHTS

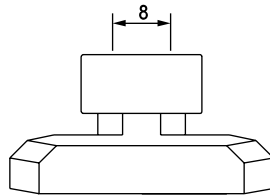
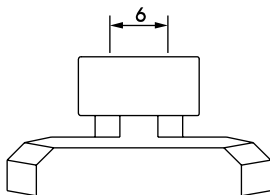


RC-RAIL-H11

RC-RAIL-H14

RC-RAIL-H30

RAIL NUTS



RC-RN-M6

RC-RN-M8

M6 THREAD SUITS ALL RCS CLAMPS AND RCD GROUP 1 CLAMPS

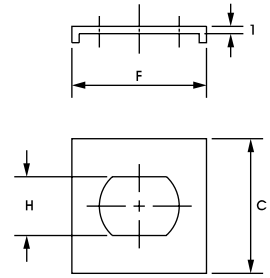
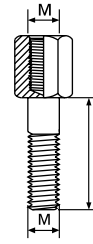
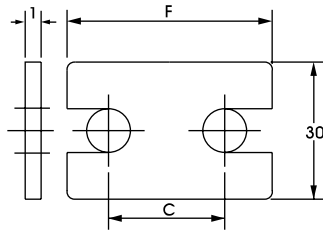
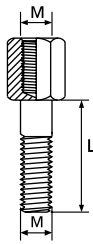
M8 THREAD SUITS RCD GROUPS 2 TO 5 CLAMPS

ASSEMBLY WITH MOUNTING RAIL

Mounting Rail is available in lengths of 2 metres, and in three different heights. Mounting rail can be welded on or screwed on. Insert Rail Nut(s) into Mounting Rail, and when located in the correct position, twist Rail Nut in clockwise direction to lock it in place. Proceed as above.

Clamps should be positioned both before and after bends, as near as possible to the bend.

RCS-BS	RCS-PS	RCD-BS	RCD-PS
--------	--------	--------	--------



SINGLE CLAMP BOLT STACKING	DIMENSIONS M x L	SINGLE CLAMP PLATE STACKING	DIMENSIONS F x C	DOUBLE CLAMP BOLT STACKING	DIMENSIONS M x L	DOUBLE CLAMP PLATE STACKING	DIMENSIONS F x C x H
PART NO	mm	PART NO	mm	PART NO	mm	PART NO	mm
RCS-1BS	M6 x 20	RCS-1PS	34 x 20	RCD-1BS	M6 x 20	RCD-1PS	32 x 30 x 13
RCS-2BS	M6 x 25	RCS-2PS	40 x 26	RCD-2BS	M8 x 20	RCD-2PS	32 x 30 x 14
RCS-3BS	M6 x 30	RCS-3PS	48 x 33	RCD-3BS	M8 x 29	RCD-2PS*	32 x 30 x 14
RCS-4BS	M6 x 35	RCS-4PS	57 x 40	RCD-4BS	M8 x 34	RCD-2PS*	32 x 30 x 14
RCS-5BS	M6 x 50	RCS-5PS	68 x 52	RCD-5BS	M8 x 47	RCD-2PS*	32 x 30 x 14

*Group 2 Stacking Plate also suits Groups 3, 4 & 5.

ASSEMBLY WITH STACKING COMPONENTS

Fasten Bottom Plate of Mounting Rail & Rail Nuts as above. Position lower half of Jaws, Hose or Tube, and upper half of Jaws. Secure into place with Stacking Bolt(s) with extended hex of Stacking Bolt(s) protruding above upper half of Jaws. Stacking Plate is then placed over Stacking Bolt(s) to prevent the Bolts turning. The next Mounting Clamp can then be mounted on top of first clamp. Single Clamps of the same Group only can be stacked on top of each other.

Double Clamps of different Groups of Groups 2 to 5 can be stacked. Double Group 1 Clamps can only be stacked on other Double Group 1 Clamps.

Clamps should be positioned both before and after bends, as near as possible to the bend.

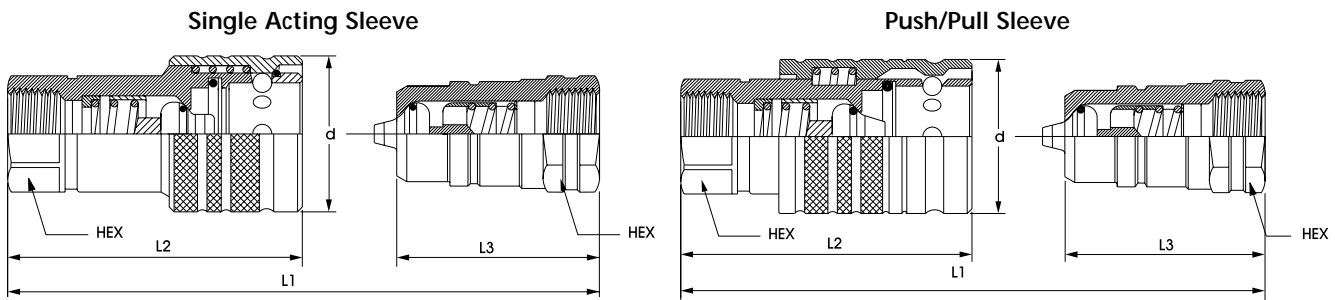
RECOMMENDED BOLT TORQUE

Series		Bolt Size	Nm	Ft. lbs
RCS Series Single Clamps	All Groups	M6	8	6
RCD Series Double Clamps	Group 1	M6	5	4
	Group 2-4	M8	12	9
	Group 5	M8	8	6

RECOMMENDED SPACING

Clamp ID in mm	Maximum distance between Clamps in mm
6 to 14	900
15 to 22	1200
23 to 28	1500
30 to 38	2000
42	2500

R80, R81, R82, & R86 SERIES – POPPET CHECK VALVES



SINGLE ACTING SLEEVE POPPET CHECK VALVES

DIMENSIONS IN MM

FEMALE THREAD SIZE	NOM. BODY SIZE	RYCO PART NUMBER			MAXIMUM WORKING PRESSURE		d DIAMETER OF SLEEVE	L1 LENGTH COUPLED TOGETHER	L2 LENGTH FEMALE BODY	L3 LENGTH MALE TIP	SPANNER HEX SIZE
		FEMALE BODY	MALE TIP	COMPLETE COUPLING	BAR	PSI					
1/4 BSPP	1/4	R80-04F	R80-04M	R80-04FM	350	5100	27	76	56	38	19
3/8 BSPP	3/8	R80-06F	R80-06M	R80-06FM	300	4350	34	85	63	43	24
1/2 BSPP	1/2	R81-08F	R81-08M	R81-08FM	300	4350	38	96	70	48	27
3/4 BSPP	3/4	R82-12F	R82-12M		250	3625	45	114	85	57	34
1 BSPP	1	R82-16F	R82-16M	R82-16FM	200	2900	52	131	99	65	41
3/4 UNO	1/2	R86-12F	R86-12M	R86-12FM	300	4350	38	96	70	48	27

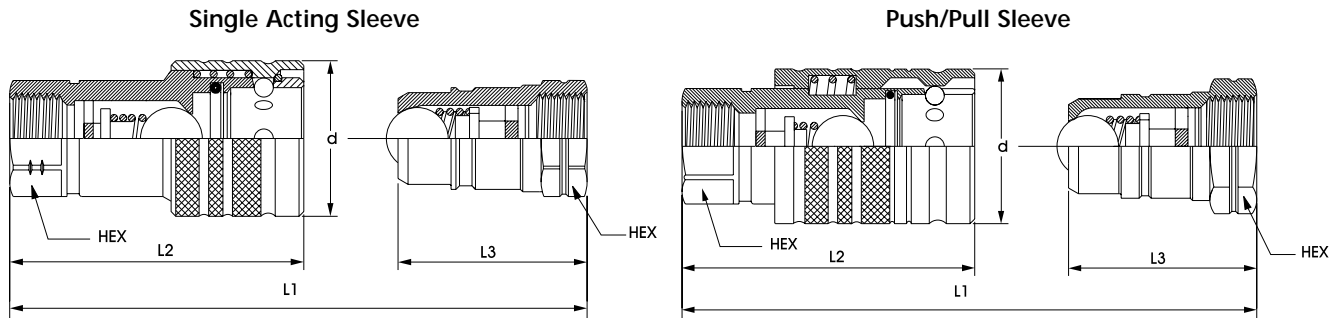
PUSH/PULL SLEEVE POPPET CHECK VALVES

DIMENSIONS IN MM

FEMALE THREAD SIZE	NOM. BODY SIZE	RYCO PART NUMBER			MAXIMUM WORKING PRESSURE		d DIAMETER OF SLEEVE	L1 COUPLED TOGETHER	L2 LENGTH FEMALE BODY	L3 LENGTH MALE TIP	SPANNER HEX SIZE
		FEMALE BODY	MALE TIP	COMPLETE COUPLING	BAR	PSI					
1/2 BSPP	1/2	R81-08P	R81-08M	R81-08PM	300	4350	38	96	70	48	27
3/4 UNO	1/2	R86-12P	R86-12M	R86-12PM	300	4350	38	96	70	48	27

- General purpose steel hydraulic couplings. Heavy Duty Plated.
- Typical applications include industrial equipment, hydraulic hand tools, agricultural machinery, construction and mobile plant, hydraulic cylinders, test rigs and power packs, logging equipment, mining machinery, oil processing and steel production.
- 1/2", 3/4", & 1" Nominal Body sizes conform to ISO Type A.
1/4", 3/8" & 1/2" Nominal Body sizes interchange with Pioneer and Safeway. See Page 187 for interchange listing.
- Poppet Check Valves feature rubber poppet seal for improved sealing when disconnected. Check Valves automatically close on disconnection and open on re-connection.
- Improved Flow and less pressure drop compared to Ball Type Check Valves. See Pressure Drop Flow Charts on page 192.
- Single Acting Sleeve is manually retracted to connect or disconnect.
- Push/Pull Sleeve can be moved in either direction to connect or disconnect. When sleeve is held firmly by hand or in a bracket, male tip will simply push in to connect to female body.
- 1/2" Nominal Body Sizes can be mounted in dual breakaway bracket. If farm implement being towed disconnects from tractor, coupling halves will break apart without damage to hoses. See page 186.
- Nitrile O ring female body seal is compatible with mineral oil based hydraulic fluids from -25°C to +125°C. Teflon backup washer prevents extrusion of O ring at high pressure. Teflon™ DuPont.
- Couplings are able to swivel after connection, reducing hose kinking and twisting. This feature should only be used to reduce twist on hose; the couplings should not be used as swivel joints.
- RYCO Quick Release Couplings have full spanner hex for ease of installation and extra balls in locking mechanism for extra security. Individual Nominal Body Sizes of R80, R81, R82 & R86 Series can be interconnected, and can be connected to same

R91, R94 & R96 SERIES – BALL CHECK VALVES



SINGLE ACTING SLEEVE BALL VALVES

DIMENSIONS IN MM

FEMALE THREAD SIZE	NOM. BODY SIZE	RYCO PART NUMBER			MAXIMUM WORKING PRESSURE		d DIAMETER OF SLEEVE	L1 LENGTH COUPLED TOGETHER	L2 LENGTH FEMALE BODY	L3 LENGTH MALE TIP	SPANNER HEX SIZE
		FEMALE BODY	MALE TIP	COMPLETE COUPLING	BAR	PSI					
1/2 BSPP	1/2	R91-08F	R91-08M	R91-08FM	250	3625	38	96	70	48	27
1/4 NPTF	1/4	R94-04F	R94-04M	R94-04FM	250	3625	27	76	56	38	19
3/8 NPTF	3/8	R94-06F	R94-06M	R94-06FM	250	3625	34	85	63	43	24
1/2 NPTF	1/2	R94-08F	R94-08M	R94-08FM	250	3625	38	96	70	48	27

PUSH/PULL SLEEVE BALL VALVES

DIMENSIONS IN MM

FEMALE THREAD SIZE	NOM. BODY SIZE	RYCO PART NUMBER			MAXIMUM WORKING PRESSURE		d DIAMETER OF SLEEVE	L1 COUPLED TOGETHER	L2 LENGTH FEMALE BODY	L3 LENGTH MALE TIP	SPANNER HEX SIZE
		FEMALE BODY	MALE TIP	COMPLETE COUPLING	BAR	PSI					
1/2 BSPP	1/2	R91-08P	R91-08M	R91-08PM	250	3625	38	96	70	48	27
1/2 NPTF	1/2	R94-08P	R94-08M	R94-08PM	250	3625	38	96	70	48	27
3/4 UNO	1/2	R96-12P	R96-12M	R96-12PM	250	3625	38	96	70	48	27

- General purpose steel hydraulic couplings. Heavy Duty Plated.
- Typical applications include industrial equipment, hydraulic hand tools, agricultural machinery, construction and mobile plant, hydraulic cylinders, test rigs and power packs, logging equipment, mining machinery, oil processing and steel production.
- 1/2" Nominal Body sizes conform to ISO Type A.
1/4", 3/8" & 1/2" Nominal Body sizes interchange with Pioneer and Safeway. See Page 187 for interchange listing.
- Traditional Ball Check Valves are precision machined for long reliable life. (Some slight weeping may occur if couplings are pressurised when disconnected). Check Valves automatically close on disconnection and open on re-connection.
- Pressure Drop Flow Charts on page 192.
- Single Acting Sleeve is manually retracted to connect or disconnect.
- Push/Pull Sleeve can be moved in either direction to connect or disconnect. When sleeve is held firmly by hand or in a bracket, male tip will simply push in to connect to female body.
- 1/2" Nominal Body Sizes can be mounted in dual breakaway bracket. If farm implement being towed disconnects from tractor, coupling halves will break apart without damage to hoses. See page 186.
- Nitrile O ring female body seal is compatible with mineral based oil hydraulic fluids from -25°C to +125°C. Teflon backup washer prevents extrusion of O ring at high pressure. Teflon™ DuPont.
- Couplings are able to swivel after connection, reducing hose kinking and twisting. This feature should only be used to reduce twist on hose; the couplings should not be used as swivel joints.
- RYCO Quick Release Couplings have full spanner hex for ease of installation and extra balls in locking mechanism for extra security. Individual sizes of R91 & R94 Series can be interconnected, and can be connected to same Nominal Body Size of

R80, R81, R82, R86, R91, R94 & R96 SERIES

BREAKAWAY BRACKETS AND BREAKAWAY KITS



RB-08P DUAL 1/2 INCH KIT

Comprises 2 x R81-08PM Female & Male Couplers
 Push/Pull
 1 x RB-08 Bracket
 4 x C38X Circlips
 2 x RDP-08 Dust Plugs
 2 x RDC-08 Dust Caps

Also available separately:

RB-08 DUAL BRACKET FOR 1/2 INCH COUPLINGS
 (including 4 Circlips)

- 1/2" Sizes can be mounted in dual breakaway bracket, by means of circlips around sleeve. If farm implement being towed disconnects from tractor, coupling halves will break apart without damage to hoses.
- A Double Acting Sleeve coupling mounted in breakaway bracket will allow male tip to push-to-connect. A Single Acting coupling requires coupling to be pushed forward from behind breakaway bracket to connect.

SPARE PARTS

PART NO	DESCRIPTION	SUITS
R80-04O	-04 O Ring	R80-04F, R94-04F
R80-04T	-04 Teflon Washer	R80-04F, R94-04F
R80-06O	-06 O Ring	R80-06F, R94-06F
R80-06T	-06 Teflon Washer	R80-06F, R94-06F
R81-08O	-08 O Ring Single Acting Sleeve	R81-08F, R86-12F, R94-08F
R81-08T	-08 Teflon Washer Single Acting Sleeve	R81-08F, R86-12F, R94-08F
R81-08PO	-08 O Ring Push/Pull Sleeve	R81-08P, R86-12P, R91-08P, R94-08P, R96-12P
R81-08PT	-08 Teflon Washer Push/Pull Sleeve	R81-08P, R86-12P, R91-08P, R94-08P, R96-12P
R82-12O	-12 O Ring	R82-12F
R82-12T	-12 Teflon Washer	R82-12F
R82-16O	-16 O Ring	R82-16F
R82-16T	-16 Teflon Washer	R82-16F

DUST CAPS AND PLUGS (DP = DUST PLUG DC = DUST CAP)

Teflon™ DuPont.

SUITS	BLACK RUBBER	RED PLASTIC
R80-04F, R94-04F R80-04M, R94-04M	QDP-04 QDC-04	
R80-06F, R94-06F R80-06M, R94-06M	QDP-06 QDC-06	
R81-08F, R81-08P, R86-12F, R86-12P, R91-08P, R96-12P, R94-08F, R94-08P,	QDP-08	RDP-08 (Prev. Part No. RF-08)
R81-08M, R86-12M, R91-08M, R94-08M, R96-12M	QDC-08	RDC-08 (Prev. Part No. RM-08)
R82-12F R82-12M	QDP-12 QDC-12	
R82-16F R82-16M	QDP-16 QDC-16	



RECOMMENDED MAXIMUM PRESSURE FOR CONNECTION & DISCONNECTION

Trapped pressure in couplers may make it difficult to connect or disconnect. Shown below are ISO Recommended Maximum Internal Pressure for Connection and Disconnection by hand.

NOMINAL BODY SIZE	BAR	PSI
1/4"	10	145
3/8"	6,3	90
1/2"	6,3	90
3/4"	3,2	45
1"	2,5	35

INTERCHANGE CHART

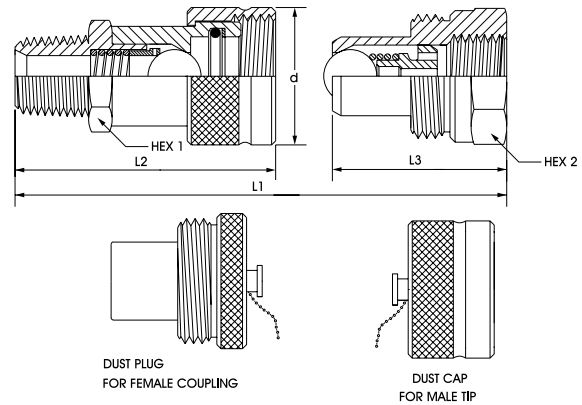
All standards specify the dimensions of Male Tips. Female Bodies are not dimensioned and are designed to accept Male Tips.

RYCO PART NO			PARKER/PIONEER PART NO		SAFEWAY PART NO		
FEMALE BODY	MALE TIP	COMPLETE COUPLING	FEMALE BODY	MALE TIP	FEMALE BODY	MALE TIP	COMPLETE COUPLING
1/4" INDUSTRIAL/AG INTERCHANGE							
R80-04F	R80-04M	R80-04FM	4050-2P*	4010-2P*			
R94-04F	R94-04M	R94-04FM	4050-2	4010-2	S45-2	S41-2	S40-2
3/8" INDUSTRIAL/AG INTERCHANGE							
R80-06F	R80-06M	R80-06FM	4050-3P*	4010-3P*			
R94-06F	R94-06M	R94-06FM	4050-3	4010-3	S45-3	S41-3	S40-3
1/2" ISO A INTERCHANGE CONFORMS TO ISO 7241-1 SERIES A, ISO 5675, AS2393, SAE J1036							
R81-08F	R81-08M	R81-08FM	6601-8-10*	6602-8-10*	S25-4P*	S71-4P*	S20-4P*
R81-08P	R81-08M	R81-08PM			S45-4P*	S71-4P*	S40-4P*
R86-12F	R86-12M	R86-12FM	6608-8-10	6610-8-10	S25-15P	S71-15P	S20-15P
R86-12P	R86-12M	R86-12PM			S45-15P	S71-15P	S40-15P
R91-08F	R91-08M	R91-08FM	4050-4*	8010-4*	S25-4*	S71-4*	S20-4*
R91-08P	R91-08M	R91-08PM	4250-4*	8010-4*	S45-4*	S71-4*	S40-4*
R94-08F	R94-08M	R94-08FM	4050-4	8010-4	S25-4	S71-4	S20-4
R94-08P	R94-08M	R94-08PM	4250-4	8010-4	S45-4	S71-4	S40-4
R96-12P	R96-12M	R96-12PM	4050-15	8010-15	S45-15	S71-15	S40-15
3/4" ISO A INTERCHANGE CONFORMS TO ISO 7241-1 SERIES A, ISO 5675							
R82-12F	R82-12M	R82-12FM	6601-12-12*	6602-12-12*	S565-6*	S561-6*	S56-6*
1" ISO A INTERCHANGE CONFORMS TO ISO 7241-1 SERIES A							
R82-16F	R82-16M	R82-16FM	6601-16-16*	6602-16-1616*	S565-8*	S561-8*	S56-8*

RYCO PART NO			AEROQUIP PART NO			FASTER PART NO	
FEMALE BODY	MALE TIP	COMPLETE COUPLING	FEMALE BODY	MALE TIP	COMPLETE COUPLING	FEMALE BODY	MALE TIP
1/4" INDUSTRIAL/AG INTERCHANGE							
R80-04F	R80-04M	R80-04FM	FD42-1001-04-04*	FD42-1002-04-04*	FD42-1000-04-04*	NV14GASF	NV14GASM
3/8" INDUSTRIAL/AG INTERCHANGE							
R80-06F	R80-06M	R80-06FM				NV38GASF	NV38GASM
1/2" ISO A INTERCHANGE CONFORMS TO ISO 7241-1 SERIES A, ISO 5675, AS2393, SAE J1036							
R81-08F	R81-08M	R81-08FM				ANV12GASF	ANV12GASM
R81-08P	R81-08M	R81-08PM	5601-8-10S*	5602-8-10S*	5600-8-10S*	PV12GASF	NV12GASM
R86-12P	R86-12M	R86-12PM	5608-8-10S	5610-8-10S	5606-8-10S		
R91-08P	R91-08M	R91-08PM				PS12GASF	NS12GASM
R94-08P	R94-08M	R94-08PM				PS12NPTF	NS12NPTM
3/4" ISO A INTERCHANGE CONFORMS TO ISO 7241-1 SERIES A, ISO 5675							
R82-12F	R82-12M	R82-12FM	5601-12-12S*	5602-12-12S*	5600-12-12S*	ANV34GASF	ANV34GASM
1" ISO A INTERCHANGE CONFORMS TO ISO 7241-1 SERIES A							
R82-16F	R82-16M	R82-16FM	5601-16-16S*	5602-16-16S*	5600-16-16S*	ANV1GASF	ANV1GASM

*Means Competitors Coupling is NPT not BSPP.

R100 SERIES – 10,000 PSI SCREW TOGETHER QUICK RELEASE COUPLINGS



THREAD SIZE	NOM. BODY SIZE	FEMALE BODY	MALE TIP	RYCO PART NUMBER			MAXIMUM WORKING PRESSURE	
				COMPLETE COUPLING	DUST PLUG FOR FEMALE	DUST CAP FOR MALE	BAR	PSI
1/4 NPTF	3/8	R100-04F	R100-04M	R100-04FM	R100-06DP	R100-06DC	700	10000
3/8 NPTF	3/8	R100-06F	R100-06M	R100-06FM	R100-06DP	R100-06DC	700	10000

R100-04FMPC is complete 1/4" Male and Female Coupling with Dust Plug and Dust Cap
R100-06FMPC is complete 3/8" Male and Female Coupling with Dust Plug and Dust Cap

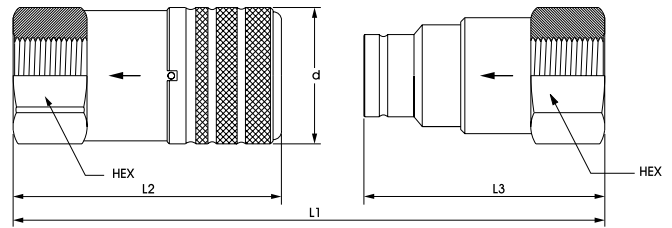
DIMENSIONS IN MM

THREAD SIZE	NOM. BODY SIZE	d DIAMETER OF SLEEVE	DIAMETER MALE TIP	HEX 1	HEX 2	L1 LENGTH COUPLED TOGETHER	L2 LENGTH FEMALE BODY	L3 LENGTH MALE TIP
1/4 NPTF	3/8	35	19	24	32	89	74	40,5
3/8 NPTF	3/8	35	19	24	32	87	72	40,5

- Designed for use in high pressure applications on portable cylinders, rams, pumps, and hydraulic rescue equipment where low flow rates and pressures up to 700 bar/10,000 psi are involved. Heavy Duty Silver colour Plating.
- Threaded Sleeve on female body engages thread on male tip. When sleeve is screwed completely up, the two coupling halves are secured together, and the ball check valves open. Can connect and disconnect with pressure in lines.
- Precision ball type check valves.
- Metal Threaded Dust Caps and Dust Plugs complete with captive chain are available.
- Female body is male threaded to screw directly into cylinder or ram.
- Male tip is female threaded to screw directly onto male threaded hose fitting.
- Temperature range from -25°C to +120°C.
- Pressure Drop Flow Charts on page 192.
- Nitrile O ring female body seal is compatible with mineral oil based hydraulic fluids. Teflon backup washer prevents extrusion of O ring at high pressure.
- 3/8" Nominal Body Size is interchangeable with Enerpac C-604, Powerteam C38, Parker 3000, Safeway S30.

Teflon™ DuPont.

R110 SERIES – FLAT FACE VALVE QUICK RELEASE COUPLINGS



DIMENSIONS IN MM

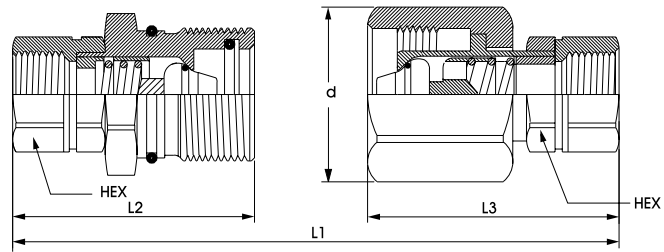
FEMALE THREAD SIZE BSPF	NOM. BODY SIZE	RYCO PART NUMBER			MAXIMUM WORKING PRESSURE		DIAMETER OF SLEEVE	L1 LENGTH COUPLED TOGETHER	L2 LENGTH FEMALE BODY	L3 LENGTH MALE TIP	SPANNER HEX SIZE
		FEMALE BODY	MALE TIP	COMPLETE COUPLING	BAR	PSI					
3/8	3/8	R110-06F	R110-06M	R110-06FM	300	4350	30	114	66	64	27
1/2	3/8	R110-08F	R110-08M	R110-08FM	300	4350	30	124	72	68	27
3/4	3/4	R110-12F	R110-12M	R110-12FM	250	3625	38	138	84	72	36
1	1	R110-16F	R110-16M	R110-16FM	250	3625	48	151	87	85	46

- Flat Face Valve design minimises fluid loss on disconnection for a cleaner, safer environment. Used wherever hydraulic oil spillage is a safety hazard, either in plant or in the field. Recommended for quick changeover of hydraulic hand tools in "cherry picker" platforms, and in the mining, road construction and maintenance industries, as well as many industrial applications.
- Heavy Duty Gold colour Plating.
- High flow rates with low pressure loss. Pressure Drop Flow Charts on page 193.
- Low air inclusion during connection and disconnection.
- Easily cleaned exterior surfaces reduce possibility of contamination of hydraulic system.
- Easy one handed automatic push-to-connect operation when either half of coupling is solid mounted. Sleeve does not have to be retracted to enable connection. Connects against 250 psi static pressure.
- Rotating Sleeve Lock safety feature (simply rotate the retracting sleeve) guards against unintentional disconnection. Cannot be disconnected unless pin and recess on sleeve are aligned.
- To disconnect, rotate the sleeve to align pin and recess on sleeve. Pull back the sleeve and the two halves pop apart.
- Temperature range from -25°C to +125°C. Mineral oil based hydraulic fluids.
- Couplings are able to swivel after connection, reducing hose kinking and twisting. This feature should only be used to reduce twist on hose; the couplings should not be used as swivel joints.
- When arrows are stamped on body of couplings, flow must be in direction of arrows.
- 3/8" Nominal Body size conforms to HTMA dimensions (Hydraulic Tool Manufacturers Association), and Spec. ANSI/NFPA T3.20.15-1991.
- 3/8" Nominal Body size is dimensionally interchangeable with Parker FF 371/372, Snaptite 74 Series, Aeroquip FD 49,



Thread to Connect Heavy Duty Quick Release Couplings

R120 SERIES – THREAD TO CONNECT HEAVY DUTY QUICK RELEASE COUPLINGS



DIMENSIONS IN MM

FEMALE THREAD SIZE BSPP	NOM. BODY SIZE	RYCO PART NUMBER			MAXIMUM WORKING PRESSURE		d DIAMETER OF SLEEVE	L1 LENGTH COUPLED TOGETHER	L2 LENGTH FEMALE BODY	L3 LENGTH MALE TIP	SPANNER HEX SIZE
		FEMALE BODY	MALE TIP	COMPLETE COUPLING	BAR	PSI					
1/2	1/2	R120-08F	R120-08M	R120-08FM	400	5800	42	102	52	66	30
3/4	1	R120-12F	R120-12M	R120-12FM	300	4350	55 A/F	153	78	100	41
1	1	R120-16F	R120-16M	R120-16FM	300	4350	55 A/F	153	78	100	41

NOTE: R120-08F Sleeve is Round
R120-12F and R120-16F Sleeve is Hex

- Heavy Duty hydraulic quick release couplings suitable for high pressure applications involving pressure impulses.
- Rugged thread-to-connect operation allows higher working pressures, and improved performance under pressure impinging conditions. Threaded nut on female body engages thread on male tip. When nut is screwed completely up, the two coupling halves are secured together, and the Poppet Check Valves open to allow flow.

RB-08P DUAL 1/2 INCH KIT

Comprises 2 x R81-08PM
Push/Pull

Female & Male Couplers

- 1 x RB-08 Bracket
- 4 x C38X Circlips
- 2 x RDP-08 Dust Plugs
- 2 x RDC-08 Dust Caps

- Connection and disconnection is possible with circuit pressure of up to 103 Bar (1500psi).

- Poppet Check Valves feature rubber poppet seal. Check Valves automatically close on disconnection and open on

PART

R120- Also available separately:

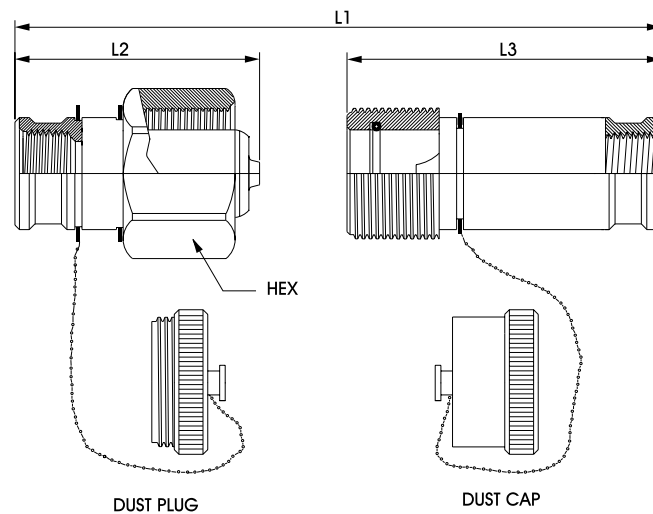
R120-

R120- **RB-08 DUAL BRACKET FOR 1/2 INCH COUPLINGS**
(including 4 Circlips)

R120-

Pressure Drop Flow Charts on page 192.
Pressure Drop Flow Charts on page 193.

**PLEASE NOTE: MAT (material) column B = BRASS S
= PLATED STEEL**

R122 SERIES – THREAD TO CONNECT EXTRA HEAVY DUTY QUICK RELEASE HI-FLOW COUPLINGS

DIMENSIONS IN MM

FEMALE THREAD SIZE BSPF	NOM. BODY SIZE	RYCO PART NUMBER			MAXIMUM WORKING PRESSURE		L1 LENGTH COUPLED TOGETHER	L2 LENGTH FEMALE BODY	L3 LENGTH MALE TIP	SPANNER HEX SIZE	FLOW RATE LTR/MIN
		FEMALE BODY	MALE TIP	COMPLETE COUPLING	BAR	PSI					
1	1	R122-16F	R122-16M	R122-16FM	350	5100	152	72	106	70	150
1.1/4	1.1/4	R122-20F	R122-20M	R122-20FM	320	4640	165	84	118	80	230

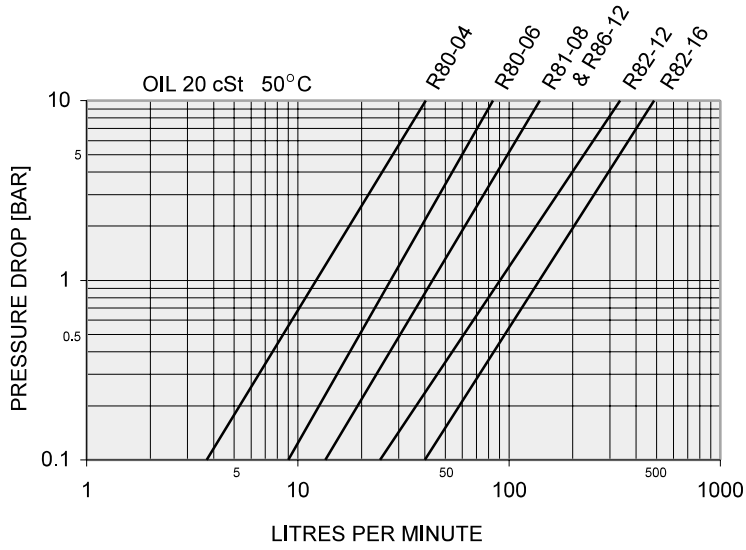
R122 SPARE PARTS

PART NO	APPLICATION
R122-16KIT R122-20KIT	Poppet Valve complete with Spring, Spacer & Retaining Ring. Suits both Female Body & Male Tip.
R122-16TO R122-20TO	Teflon Back Up Ring and Body Seal O Ring for Male Tip
R122-16DP R122-16DC	Dust Plug suits R122-16F Dust Cap suits R122-16M
R122-20DP R122-20DC	Dust Plug suits R122-20F Dust Cap suits R122-20M

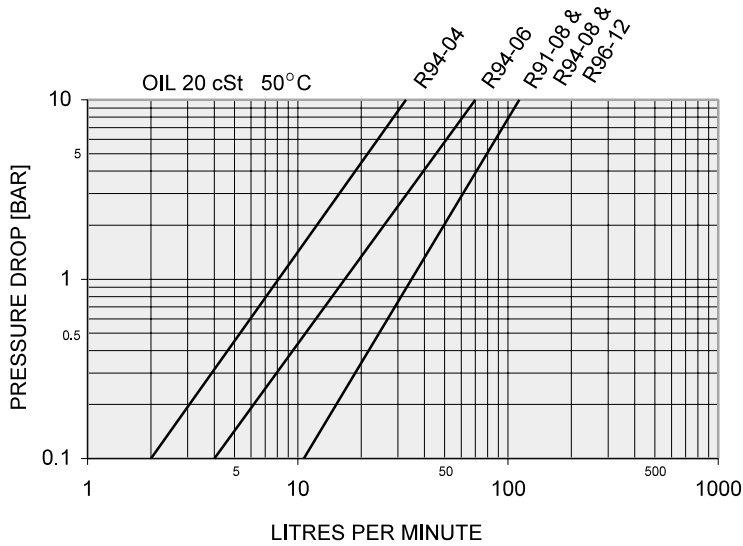
- Extra Heavy Duty hydraulic quick release couplings suitable for high pressure applications involving pressure impulses. Applications include Rock Breakers and Hammers. Hard Plastic Dust Plug and Dust Cap on captive chain are supplied as standard.
- Rugged thread-to-connect operation allows higher working pressures. Threaded nut on female body engages thread on male tip. When nut is screwed completely up, the two coupling halves are secured together, and the Poppet Check Valves open to allow flow. Connection and disconnection is possible with circuit pressure of up to 103 bar (1500psi).
- Poppet Check Valves feature rubber poppet seal. Check Valves automatically close on disconnection and open on re-connection.
- Nitrile O ring female body seal is compatible with mineral oil based hydraulic fluids from -25°C to +100°C. Teflon back-up washer prevents extrusion of O ring at high pressure.

Teflon™ DuPont.

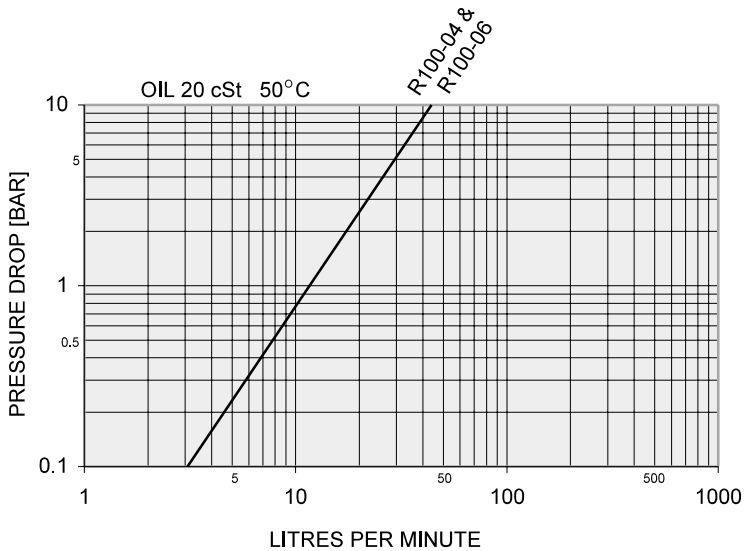
R80, R81, R82, & R86 SERIES – POPPET CHECK VALVES



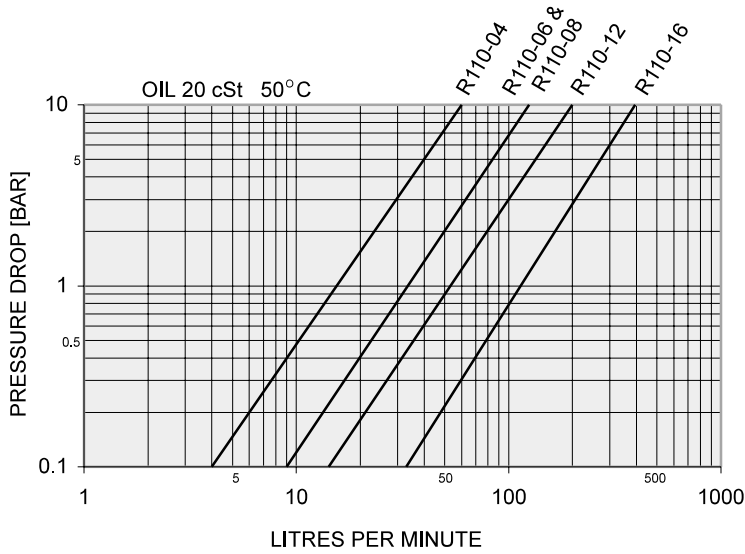
R91, R94 & R96 SERIES – BALL CHECK VALVES



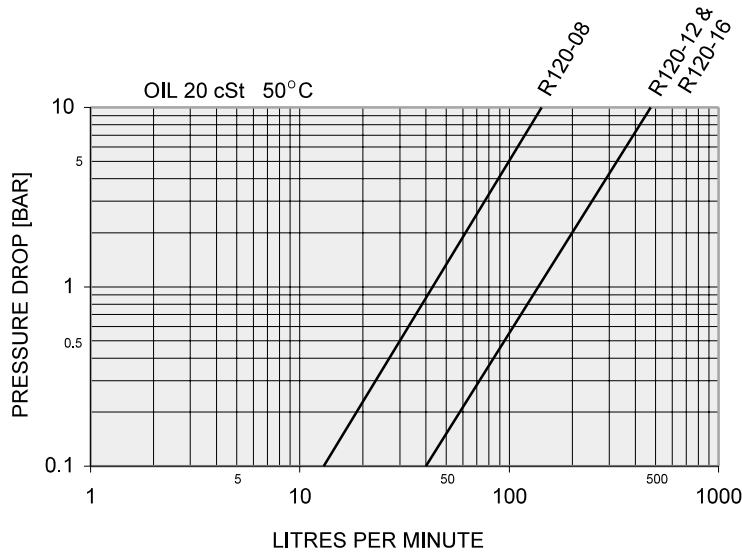
R100 SERIES – 10,000 PSI SCREW TOGETHER QUICK RELEASE COUPLINGS



R110 SERIES – FLAT FACE VALVE QUICK RELEASE COUPLINGS



R120 SERIES – THREAD TO CONNECT HEAVY DUTY QUICK RELEASE COUPLINGS



The next six pages show a summary of the features of the RYCO hydraulics range of Hydraulic Filters and Reservoir Accessories. A separate, more detailed Hydraulic Filters and Reservoir Accessories Catalogue is available on request.

Please note: Dash Sizes for Hydraulic Filters and Reservoir Accessories are sized in EIGHTHS of an inch (not SIXTEENTHS). Therefore a -06 size Filter has 6/8" = 3/4" ports.

Note: re "Nominal Flow"

Nominal Flows specified are for oil with viscosity 28 Centistokes/150 SSU.
 Nominal Flows for Return Filters are the flow rates that equate to 0,35 bar pressure differential across the filter element when clean.
 This gives a 2.85 : 1 factor (2 : 1 for RIF14 and FA35 Series) to the By Pass Valve cracking pressure which ensures long filter element life.
 Nominal Flows for Suction filters are the flow rates that equate to 0,03 bar pressure differential across the filter element when clean. This ensures effective filter life, and minimises possibility of pump cavitation.

RIF14 SERIES IN-LINE FILTER (Previous Part No #14-1)

FEATURES:

- Disposable Spin On Cartridge.
- Die Cast Aluminium Head with tapped mounting holes.
- By Pass Valve mounted in Aluminium Head. 0,7 Bar (10 psi) cracking pressure.

RECOMMENDED FOR:

Mineral and petroleum based hydraulic oils return lines, to maximum 80°C.



FA SERIES FILTERS

FEATURES:

- Disposable Spin On Cartridge.
- Die Cast Aluminium Head with tapped mounting holes.
- FA35 has By Pass Valve operating at 0,6 to 0,75 bar (8,5 to 11 psi) built into Spin On Cartridge.
- FA10, FA9 have By Pass Valve operating at 1 bar (14,5 psi) built into Spin On Cartridge.
- FA8 and FA39 have no By Pass Valve. Spin On Cartridge must be replaced at regular intervals, before clogging occurs.

RECOMMENDED FOR:

FA10, FA35, FA9 Mineral and petroleum based hydraulic oils return lines, to maximum 80°C.
 FA8, FA39 petrol and fuel oil filtration.



RIF15 SERIES WATER TRAP FUEL FILTER (Previous Part No #15)

FEATURES:

- Disposable Spin On Cartridge with tap to permit trapped water to be manually drained off at regular intervals.
- Extremely fine filter, silicone treated to resist water; removes dirt, rust, grit and water.
- Die Cast Aluminium Head with tapped mounting holes.

RECOMMENDED FOR:

Petrol, kerosene or diesel storage tanks with gravity feed, or pressure to 7 bar/100 psi maximum. No By Pass Valve. When fluid flow slows, cartridge must be drained of trapped water. If fluid flow is still slow, cartridge is blocked by contaminants and must be replaced. Cartridge should be replaced after each twelve month period.



COMPLETE FILTER	PORT	NOMINAL FLOW	MAX. WORKING PRESSURE	NOMINAL FILTRATION	REPLACEMENT SPIN ON CARTRIDGE
PART NO	BSPT	LPM	BAR	MICRON	PART NO
RIF14-1	1	45	7	32	R14
FA10	3/8	10	7	32	Z10
FA35	3/8	10	7	32	Z35
FA9	3/8	10	7	32	Z9
FA8	3/8	20 petrol 3,5 fuel oil	5,5	20	Z8
FA39	3/8	20 petrol 3,5 fuel oil	5,5	15	Z39
RIF15	1	Depends on Pressure	7	15	R15

RIF-06 & RIF-10 SERIES IN-LINE FILTERS ● RIF-12V & RIF-12H SERIES IN-LINE TWIN FILTERS

FEATURES:

- Disposable Spin On Cartridge(s).
- Die Cast Aluminium Head with tapped mounting holes.
- Gauge Ports for Clogging Indicators. (see page 201).
- By Pass Valve mounted in Aluminium Head.
- World Wide compatibility.

RECOMMENDED FOR:

- Mineral/petroleum based hydraulic oils, to maximum 80°C.
- RIFR Series - Return Lines - 1 Bar By Pass Valve.
- RIFS Series - Suction Lines - 0,2 Bar By Pass Valve.
- RIFB Series - Special Applications on Return Lines and Suction Lines - Blocked By Pass.



RIF-10 RIF-06

COMPLETE FILTER	PORT	NOMINAL FLOW	MAX. WORKING PRESSURE	NOMINAL FILTRATION	REPLACEMENT SPIN ON CARTRIDGE	HEAD ONLY
PART NO	BSPP	LPM	BAR	MICRON	PART NO	PART NO
RIFR SERIES - 1 BAR BY PASS VALVE						
RIFR-06-10	3/4	60	10	10	RIFE-06-10	RIFR-06H
RIFR-06-25	3/4	80	10	25	RIFE-06-25	RIFR-06H
RIFR-10-10	1.1/4	130	10	10	RIFE-10-10	RIFR-10H
RIFR-10-25	1.1/4	170	10	25	RIFE-10-25	RIFR-10H
RIFS SERIES - 0,2 BAR BY PASS VALVE						
RIFS-06-10	3/4	20	10	10	RIFE-06-10	RIFS-06H
RIFS-06-25	3/4	30	10	25	RIFE-06-25	RIFS-06H
RIFS-10-10	1.1/4	40	10	10	RIFE-10-10	RIFS-10H
RIFS-10-25	1.1/4	55	10	25	RIFE-10-25	RIFS-10H
RIFB SERIES - BLOCKED BY PASS						
RIFB-06-10	3/4	Refer to	5,5	10	RIFE-06-10	RIFB-06H
RIFB-06-25	3/4	RYCO	5,5	25	RIFE-06-25	RIFB-06H
RIFB-10-10	1.1/4		5,5	10	RIFE-10-10	RIFB-10H
RIFB-10-25	1.1/4		5,5	25	RIFE-10-25	RIFB-10H



FRONT: RIF-12V
REAR: RIF-12HB

COMPLETE FILTER	PORT	NOMINAL FLOW	MAX. WORKING PRESSURE	NOMINAL FILTRATION	REPLACEMENT SPIN ON CARTRIDGES	HEAD ONLY
PART NO		LPM	BAR	MICRON	PART NO	PART NO
RIFR SERIES - 1 BAR BY PASS VALVE						
RIFR-12V-10	1.1/2 BSPP	240	10	10	RIFE-10-10	RIFR-12VH
RIFR-12V-25	1.1/2 BSPP	300	10	25	RIFE-10-25	RIFR-12VH
RIFR-12HB-10	1.1/2 BSPP	240	10	10	RIFE-10-10	RIFR-12HBH
RIFR-12HB-25	1.1/2 BSPP	300	10	25	RIFE-10-25	RIFR-12HBH
RIFR-12HS-10	1.1/2 CD61	240	10	10	RIFE-10-10	RIFR-12HSH
RIFR-12HS-25	1.1/2 CD61	300	10	12	RIFE-10-25	RIFR-12HSH
RIFS SERIES - 0,2 BAR BY PASS VALVE						
RIFS-12V-10	1.1/2 BSPP	80	10	10	RIFE-10-10	RIFS-12VH
RIFS-12V-25	1.1/2 BSPP	100	10	25	RIFE-10-25	RIFS-12VH
RIFS-12HB-10	1.1/2 BSPP	80	10	10	RIFE-10-10	RIFS-12HBH
RIFS-12HB-25	1.1/2 BSPP	100	10	25	RIFE-10-25	RIFS-12HBH
RIFS-12HS-10	1.1/2 CD61	80	10	10	RIFE-10-10	RIFS-12HSH
RIFS-12HS-25	1.1/2 CD61	100	10	25	RIFE-10-25	RIFS-12HSH
RIFB SERIES - BLOCKED BY PASS						
RIFB-12V-10	1.1/2 BSPP	Refer to	5,5	10	RIFE-10-10	RIFB-12VH
RIFB-12V-25	1.1/2 BSPP	RYCO	5,5	25	RIFE-10-25	RIFB-12VH
RIFB-12HB-10	1.1/2 BSPP		5,5	10	RIFE-10-10	RIFB-12HBH
RIFB-12HB-25	1.1/2 BSPP		5,5	25	RIFE-10-25	RIFB-12HBH
RIFB-12HS-10	1.1/2 CD61		5,5	10	RIFE-10-10	RIFB-12HSH
RIFB-12HS-25	1.1/2 CD61		5,5	25	RIFE-10-25	RIFB-12HSH

RTIF SERIES TANK IMMERSED (TANK TOP) FILTERS
RFIF SERIES FULLY IMMERSED (TANK TOP) FILTERS

FEATURES:

- Direct Tank Top Mounting.
- All Aluminium Die Cast Construction.
- 1 Bar By Pass Valve built into Filter Element.
- Gauge Ports for Clogging Indicators. (see below).
- Filter Element replaceable through top cover plate.

RECOMMENDED FOR:

Mineral & petroleum based hydraulic oils return lines, to maximum 80°C.



COMPLETE FILTER	PORT	NOMINAL FLOW	MAX. WORK PRESSURE	NOMINAL FILTRATION	REPLACEMENT ELEMENT
PART NO	BSPP	LPM	BAR	MICRON	PART NO
RTIF-04-10	1/2	25	10	10	RTIE-04-10
RTIF-04-25	1/2	40	10	25	RTIE-04-25
RTIF-06-10	3/4	45	10	10	RTIE-06-10
RTIF-06-25	3/4	60	10	25	RTIE-06-25
RTIF-08-10	1	80	10	10	RTIE-08-10
RTIF-08-25	1	100	10	25	RTIE-08-25
RTIF-10-10	1.1/4	180	10	10	RTIE-10-10
RTIF-10-25	1.1/4	220	10	25	RTIE-10-25



COMPLETE FILTER	PORT	NOMINAL FLOW	MAX. WORK PRESSURE	NOMINAL FILTRATION	REPLACEMENT ELEMENT
PART NO	BSPP	LPM	BAR	MICRON	PART NO
RFIF-04-10	1/2	25	10	10	RFIE-04-10
RFIF-04-25	1/2	40	10	25	RFIE-04-25
RFIF-06-10	3/4	45	10	10	RFIE-06-10
RFIF-06-25	3/4	60	10	25	RFIE-06-25
RFIF-08-10	1	80	10	10	RFIE-08-10
RFIF-08-25	1	100	10	25	RFIE-08-25
RFIF-10-10	1.1/4	180	10	10	RFIE-10-10
RFIF-10-25	1.1/4	220	10	25	RFIE-10-25



RGR-40

RGS-40

CLOGGING INDICATOR – VISUAL

PART NO	DESCRIPTION
RGR-40	40MM DIAMETER GAUGE FOR RETURN LINE APPLICATION
RGS-40	40MM DIAMETER GAUGE FOR SUCTION LINE APPLICATION



CLOGGING INDICATOR – ELECTRICAL

PART NO	DESCRIPTION
REIR	ELECTRIC MICROSWITCH FOR RETURN LINE APPLICATION
REIS	ELECTRIC MICROSWITCH FOR SUCTION LINE APPLICATION

ACCESSORIES

RHF SERIES HEAVY DUTY FILTERS

FEATURES:

- All Aluminium Die Cast Construction.
- By Pass Valve mounted in Aluminium Head.
- Gauge Ports for Clogging Indicators. (see page 201).
- 20 Bar Working Pressure. RHF Series can also be used in low pressure delivery applications.
- 3 models. RHF-10 and RHF-20 models available with two different port sizes.
- 149 Micron Stainless Steel Element available especially suitable for Suction Line use.
- RHFB Series with Blocked By Pass available for special applications.
- RHFS Series also available with 10 and 25 Micron Elements.



RECOMMENDED FOR:

- Mineral/petroleum based hydraulic oils, to maximum 80°C.
- RHFR Series - Return Lines - 1 Bar By Pass Valve.
- RHFS Series - Suction Lines - 0,2 Bar By Pass Valve.
- RHFB Series - Special Applications on Return Lines and Suction Lines - Blocked By Pass.

COMPLETE FILTER	PORT	NOMINAL FLOW	MAX. WORK PRESSURE	NOMINAL FILTRATION	REPLACEMENT ELEMENT
PART NO	BSPP	LPM	BAR	MICRON	PART NO
RHFR05-04-10	1/2	30	20	10	RHFE05-10
RHFR05-04-25	1/2	40	20	25	RHFE05-25
RHFR10-06-10	3/4	60	20	10	RHFE10-10
RHFR10-06-25	3/4	90	20	25	RHFE10-25
RHFR10-08-10	1	60	20	10	RHFE10-10
RHFR10-08-25	1	90	20	25	RHFE10-25
RHFR20-10-10	1.1/4	140	20	10	RHFE20-10
RHFR20-10-25	1.1/4	180	20	25	RHFE20-25
RHFR20-12-10	1.1/2	140	20	10	RHFE20-10
RHFR20-12-25	1.1/2	180	20	25	RHFE20-25
RHFS05-04-149	1/2	20	20	149	RHFE05-149
RHFS10-06-149	3/4	40	20	149	RHFE10-149
RHFS10-08-149	1	40	20	149	RHFE10-149
RHFS20-10-149	1.1/4	120	20	149	RHFE20-149
RHFS20-12-149	1.1/2	120	20	149	RHFE20-149

RCF SERIES COMBINATION FILTERS

FEATURES:

- All Aluminium Die Cast Construction.
- By Pass Valve attached to Top Cover Plate.
- RCFR Series 1 Bar By Pass for return line applications.
- RCFS Series 0,2 Bar By Pass for suction line applications.



RECOMMENDED FOR:

- Maximum mineral and petroleum oil based hydraulic fluids, to maximum 80°C.
- Two inlet ports enable many different mounting and plumbing options.

One inlet port must be plugged when plumbing in. (Plug not supplied). Filter can be tanktop mounted or line mounted.

149 MICRON STAINLESS STEEL MESH FILTER ELEMENTS AVAILABLE. ORDER PART NO. RCFE-...-149

COMPLETE FILTER	PORT	NOMINAL FLOW	MAX. WORK PRESSURE	NOMINAL FILTRATION	REPLACEMENT ELEMENT
PART NO.		LPM	BAR	MICRON	PART NO
RCFR-04B-10	1/2 BSPP	25	20	10	RCFE-04-10
RCFR-04B-25	1/2 BSPP	40	20	25	RCFE-04-25
RCFR-06B-10	3/4 BSPP	80	20	10	RCFE-06-10
RCFR-06B-25	3/4 BSPP	110	20	25	RCFE-06-25
RCFR-08B-10	1 BSPP	120	20	10	RCFE-08-10
RCFR-08B-25	1 BSPP	160	20	25	RCFE-08-25
RCFR-12B-10	1.1/2 BSPP	250	20	10	RCFE-12-10
RCFR-12B-25	1.1/2 BSPP	350	20	25	RCFE-12-25
RCFR-20S-10	2.1/2 CD61	600	20	10	RCFE-20-10
RCFR-20S-25	2.1/2 CD61	720	20	25	RCFE-20-25

RSCN SERIES SUCTION STRAINERS

FEATURES:

- Sturdy all metal construction, epoxy bonded.
- Filtration 149 microns.
- Stainless steel mesh strainer can be cleaned.
- BSPP Threads.

RECOMMENDED FOR:

Use on suction line within oil reservoir. Mineral/petroleum oil based hydraulic fluids and lubricants to maximum working temperature 85° C.



PART NO	NOMINAL FLOW	PORT
	LPM	BSPP
RSCN-012-02	12	1/4
RSCN-020-06	20	3/4
RSCN-028-06	28	3/4
RSCN-040-08	40	1
RSCN-060-10	60	1.1/4
RSCN-080-12	80	1.1/2
RSCN-120-12	120	1.1/2
RSCN-160-16	160	2
RSCN-200-16	200	2
RSCN-300-20	300	2.1/2
RSCN-400-24	400	3
RSCN-600-24	600	3

RD SERIES DIFFUSERS

FEATURES:

- Sturdy all metal construction.
- BSPP threads.

RECOMMENDED FOR:

Use in reservoir below oil level. Minimises turbulence and foaming by reducing discharge velocity in two stages. Maximum working temperature 85°C.



PART NO	PORT	NOMINAL FLOW
	BSPP	LPM
RD-06	3/4	100
RD-08	1	160
RD-10	1.1/4	240
RD-12	1.1/2	320
RD-16	2	480

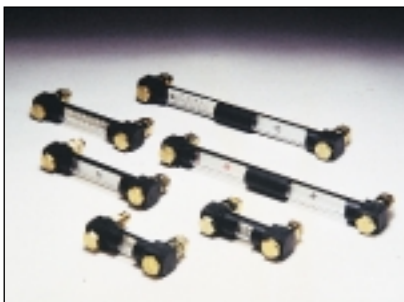
RLG & RLGT SERIES LEVEL GAUGES.

FEATURES:

- RLG Series Level Gauge.
- RLGT Series Level Gauge with Thermometer to 90° C.
- Three sizes.
- O ring type construction.
- Can be mounted on tapped M12 holes or bolt through tank wall.

RECOMMENDED FOR:

Mineral/petroleum based hydraulic oils in non-pressurised tanks only.



RLG SERIES		RLGT SERIES		BOLT CENTRE	
PART NO	PART NO	mm	ins		
RLG-03	RLGT-03	76	3		
RLG-05	RLGT-05	127	5		
RLG-10	RLGT-10	254	10		

R60 & R300 SERIES AIR BREATHER FILTERS

FEATURES:

- Sturdy steel construction.
- Five Series

- R350 Standard Air Breather
- R355 Pressurised Air Breather, helps to maintain 5 psi positive pressure in reservoir
- R60 Domed Air Breather
- R362 Standard Pleated Paper Element Air Breather
- R356 High Volume Pleated Paper Element Air Breather

Note: R362 and R356 Series were previously #362 & #356 Series. Dash sizes for these Series **only** are in sixteenths of an inch. R60 series were previously #60 etc.



R350-02 R350-06 R355



R362 R60 R356



R365

PART NO	THREAD	NOMINAL FILTRATION	DIS-PLACEMENT	OVERALL HEIGHT	DIAMETER	REPLACEMENT ELEMENT
		MICRON	LPM	mm	mm	PART NO
R350-02	1/4 BSPP	40	150	62	45	
R350-06	3/4 BSPP	40	720	78	76	
R350-06-10	3/4 BSPP	10	430	78	76	
R355-02	1/4 BSPP	40	150	62	45	
R355-06	3/4 BSPP	40	720	78	76	
R64	1/4 BSPT	149	150	56	60	
R62	3/8 BSPT	149	150	56	60	
R61	1/2 BSPT	149	150	60	60	
R60	3/4 BSPT	149	150	62	60	
R67	3/4 UNO	149	150	52	60	
R362-12	3/4 BSPT	27	1000	95	89	A245
R362-16	1 BSPT	27	1000	100	89	A245
R356-12	3/4 BSPT	27	1500	150	136	A5
R356-16	1 BSPT	27	1500	155	136	A5
R356-20	1.1/4 BSPT	27	1500	155	136	A5
R356-24	1.1/2 BSPT	27	1500	160	136	A5
R356-32	2 BSPT	27	1500	160	136	A5

R365 FILLER/STRAINER

FEATURES:

- Heavy hexagon steel cap.
- Synthetic rubber gasket.
- Weldon fitting for tank.
- Stainless Steel Mesh basket strains large particles.
- Removable basket strainer.

RFSB SERIES FILLER CAP/STRAINER/AIR BREATHER

FEATURES:

- Two mounting styles:
 - round flange/bolts for vertical mount.
 - square flange/bolts for side mount.
- Steel cap vents underneath.
- Gasket and mounting hardware supplied.

RECOMMENDED FOR:

Use on standard atmospheric (non pressurised) tanks.

A = OVERALL HEIGHT
B = INSTALLED HEIGHT

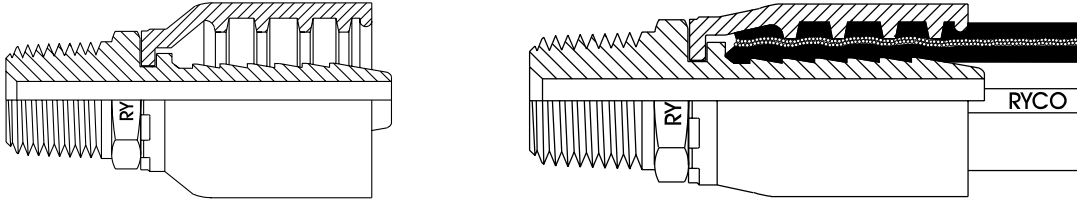


RFSB-05 RFSB-25 RFSB-25-BM

PART NO	BOLT MOUNTING HOLES	NOMINAL FILTRATION	DIS-PLACEMENT	HEIGHT A	HEIGHT B	DIAMETER
		MICRON	LPM	mm		mm
RFSB-05	3 x PCD 41,3	40	150	109	46	45
RFSB-25	6 x PCD 71,5	40	720	148	60	76
RFSB-25-10	6 x PCD 71,5	10	430	148	60	76
RFSB-25-BM	6 x 101,6 x 101,6	40	720	155	120 Wide	98 Offset

INTRODUCTION

Hydraulic Hose Crimpers (also known as Swagers or Swaging Presses) are used to permanently assemble Crimp Couplings onto Hydraulic Hose.



Shown on the next four pages are RYCO's extensive range of Hydraulic Hose Crimpers. A separate, more detailed Hydraulic Hose Crimper Catalogue is available on request.

A number of factors need to be considered when choosing a Crimper; and RYCO sales staff are pleased to assist in identifying the best model to suit your budget and needs.

Factors Include:

1. HOSE SIZES TO BE CRIMPED
Generally, Crimpers are in either 1.1/4" or 2" Hose Size capacity.
2. POWERING OPTIONS
Options are Hand pump, auxiliary pump (eg. air/oil), 12 volt, 240 volt, 440 volt.
3. VERTICAL OR HORIZONTAL HOSE FEEDING INTO CRIMPER
4. CRIMP DIAMETER SETTING
Options are manual control plate/colour wheel; vernier dials; computer controlled.
5. METHOD OF OPERATION
Manual or automatic stop when crimping diameter is reached.

RA20/RA20HP 1.1/4" VERTICAL CRIMPERS

RYCO RA20 & RA20HP Series are compact and portable heavy duty swaging presses featuring rugged construction. They are ideally suited to applications where small numbers of hose assemblies are required.



RA20HP model incorporates a Hand Pump.



RA20 model must be powered by an auxiliary pump unit such as an air/hydraulic pump.

Both models will crimp RYCO One Piece Bitelok Hose Couplings *from 1/4" to 1" in Straight, Elbows and Tube Bends, and 1.1/4" Hose Couplings in Straight and Tube Bends. Hose feeding is vertically into the machine from the top. Retraction of dies is by springs.

*Except T900 Series.

DIMENSIONS		
	RA20	RA20HP
Height:	350mm	350mm
Width:	280mm	380mm
Length:	280mm	700mm
Weight: (without oil)	80kgs	85kgs

CRIMP DIAMETER SETTING

By means of a numbered Colourwheel and sliding Indicator Rod. Manual stop when Crimp Diameter is reached.

ACCESSORIES

R20HP/R20M-12V 1.1/4" HORIZONTAL CRIMPERS



RYCO R20HP is portable and can be carried to job site by its built-in handles. It is ideally suited for use in rugged terrain, or areas where electric power is not available or cannot be used for safety reasons. Crimp Diameter is set by Control Plate on Scale Pin. Manual Stop when Crimp Diameter is reached.

Both models will crimp RYCO Hydraulic Hose Assemblies from low pressure lines to multi-spiral high pressure assemblies. Hose feeding is horizontal from both front and rear of machine. Rapid Retraction of dies is assisted by two gas spring units.

Crimpers are shown on workbench, which is not included.



RYCO R20M-12V model can utilise the 12 volt DC electrical power source of an industrial machine or service vehicle. Crimp Diameter is set by stepless adjustment of 10-turn Vernier Scale Dial to accuracy of +/- 0.1mm. Features of this machine are easy Push Button controls with automatic stop when preset Crimp Diameter is reached.

DIMENSIONS		
	R20HP	R20M-12V
Height:	370mm	370mm
Width:	410mm	500mm
Length:	600mm	600mm
Weight: (without oil)	60kgs	68kgs

R20M-1/R20M-3 1.1/4" HORIZONTAL CRIMPERS



Crimper is shown on stand, which is not included.

RYCO R20M Series are compact and efficient swaging machines, equally suitable for repair shop applications and high volume production of hose assemblies. They are powered by a 240 volt single phase motor (**R20M-1**) or by a 440 volt three phase motor (**R20M-3**).

Crimp Diameter is set by a 10 turn Vernier Scale Dial to accuracy of +/- 0.1mm, and control is by easy Push Buttons with automatic stop when preset Crimp Diameter is reached.

Hose feeding is horizontal from both front and rear of machine. Quick die retraction is powered by the machines hydraulic system.

Hose Couplings from 1/4" to 1.1/4" in Straight, Elbows and Tube Bends can be crimped. Additional die sets will allow crimping of RYCO Bitelok One Piece Couplings in sizes 1.1/2" and 2" .

DIMENSIONS		
	R20M-1	R20M-3
Height:	610mm	610mm
Width:	475mm	475mm
Length:	610mm	610mm
Weight: (without oil)	130kgs	130kgs

R32M-1/R32M-3/R32C-3 2" HORIZONTAL CRIMPERS



R32M-1 - R32M-3



R32C-3 MICRO PROCESSOR CONTROL PANEL

Photograph shows RYCO R32M-1 Crimper on optional R32QC Quick Change Base. R32C-3 is similar to R32M-1; R32C-3 has Micro Processor Control Panel shown above right in place of Vernier Scale Dial of R32M-1.

RYCO R32M-1 & R32M-3 Series Crimpers efficiently produce hose assemblies up to 2" I.D. They are capable of crimping all Hose Couplings in the RYCO range up to 2" I.D. They are powered by a 240 volt single phase motor (**R32M-1**) or by a 440 volt three phase motor (**R32M-3**). Crimp Diameter is set by a 10 - turn Vernier Scale Dial to accuracy of +/- 0.1mm and control is by easy Push Buttons with automatic stop when preset Crimp Diameter is reached. Hose feeding is horizontal from both front and rear of machine. Quick die retraction is powered by the machines hydraulic system.

R32QC Base and R32 Magnetic Tool

The R32QC Base and R32 Magnetic Tool are available as an option for R32 Series Swagers. They allow the whole die set to be changed in one easy operation. The pins on the tool engage the holes in the dies. As the swaging head opens/closes the dies are secured to or released from the swage head. The dies are held together by a magnet in the tool until the set is placed back into the Quick Change Base. In this way the dies are kept in complete sets at all times and are always used in the same order.

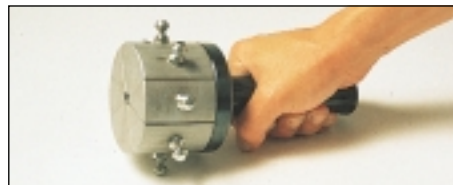
The RYCO R32C-3 (three phase 440 volt) represents the most advanced swage press design in the RYCO range. It is mainly used for high volume production of hose assemblies. It provides memory capacity for up to 12 RYCO Crimp Dimensions, as well as allowing +/- 0.1mm manual overrides. Key pad operation and pre-programmed Crimp Dimensions ensure that every assembly is manufactured to RYCO specified quality standards eliminating any possibility of incorrect assembly. The easy to read numerical display shows Crimp Diameter, die set specific correction, production quantity and recommended die set. Three types of operation are obtainable; manual, semi-automatic or automatic. A delay of 0 to 2 seconds can be programmed onto the end of the swaging cycle. Retraction diameter may also be programmed, and together with RYCO's unique quick retract system increases speed in high volume production. The unit may be provided with a free standing die holder base; with the hand held die changing tool, a complete die change can be facilitated in just seconds (see R32QC and R32 Magnetic Tool). The horizontal attitude of the swage mechanism provides operators with the most ergonomic position for crimping, an important consideration especially when large 2" diameter multi-spiral assemblies are required.

	DIMENSIONS		
	R32M-1	R32M-3	R32C-3
Height:	630mm	630mm	630mm
Width:	535mm	535mm	535mm
Length:	600mm	600mm	600mm
Weight: (without oil)	178kgs	178kgs	180kgs

ACCESSORIES

R32 Magnetic Tool

This very handy magnetic tool is also available on its own, this allows for quick removal only (when not used with R32QC Base) of dies.



R3000B-1 2" VERTICAL CRIMPER

RYCO 3000B-1 Heavy Duty Crimper is a rugged machine designed to absorb the punishment of continual use. With its remote pump and oil tank, it is ideal if space is at a premium. The R3000B-1 can crimp RYCO hose couplings from 1/4" through to 2". The RYCO 3000B-1 Crimper uses an automatic limit switch to give push-button convenience during the crimping operation - accurately and dependably.

CRIMP DIAMETER SETTING

By Rotary knob.

The swager will stop automatically when correct Crimp Diameter is achieved, and then retracts automatically. The cycle can be interrupted at any time by pushing a toggle switch.



DIMENSIONS

Crimper		Power Pack	
Height:	625mm	Height:	540mm
Width:	250mm	Width:	370mm
Length:	250mm	Length:	330mm
Weight:		Weight	
(without oil)	131 Kgs	(without oil)	31 Kgs

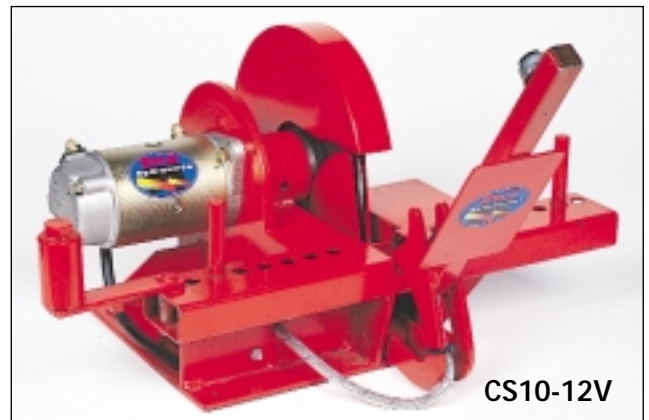
RYCO HOSE CUT-OFF SAWS MODELS: CS10/CS12

RYCO Hose Cut-Off saws are designed to cut clean 90° cuts quickly through textile braided, wire braided and multi spiralled Hydraulic Hoses.

RYCO Hose Cut-off Saws eliminate ragged or frayed hose ends which make hose assembly difficult, and are the cause of some premature hose failures. Adjustable pegs assist in maintaining the correct bend in the hose to ensure 90° square cuts. A hand lever supports the hose and feeds the hose to the blade, which is enclosed for safety. Two models are available:

CS10 models will cut up to 2" wire braided and up to 1.1/4" multi-spiralled hoses.

CS12 model will cut up to 2" wire braided and up to 2" four Spiral hoses.



CS10-12V

RYCO Steel Cut-Off Saw Blades are designed for optimum hose cutting ability, providing efficient safe cutting of braided and multispiral hoses. Matched to the RPM of RYCO Cut-Off Saws they are the only Saw Blades recommended for use with RYCO Cut-Off Saws. They are not suitable for use on non-RYCO Cut-Off Saws.

	PART NO	DESCRIPTION	MOTOR
HEAVY DUTY	CS10-12V	CUT-OFF SAW WITH 250mm (10") STEEL BLADE	12 Volt DC
	CS10-2-240	CUT-OFF SAW WITH 250mm (10") STEEL BLADE	1.5 KW/2HP 240 Volt AC (Single Phase)
SUPER HEAVY DUTY	CS12-4-440	CUT-OFF SAW WITH 300mm (12") STEEL BLADE	3 KW/4HP 440 Volt AC (3 phase)

STEEL CUT-OFF SAW BLADES	PART NO	BLADE SIZE
	CWS10	250mm (10")
	CWS12	300mm (12")

